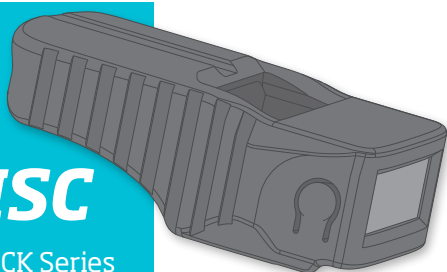
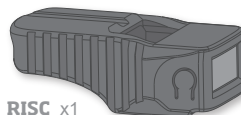


# RISC

for GLOCK Series



## PACKAGE CONTENT



RISC x1



Cover x1



Screw x2

## TOOLS

\*not included



Screwdriver  
PH000

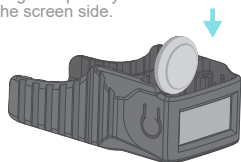


Battery x1  
CR 1632

## 1.0 ASSEMBLY

### Insert the battery

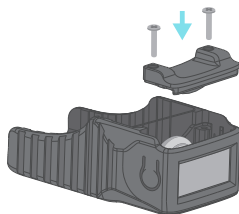
Negative polarity on the screen side.



#### WARNING

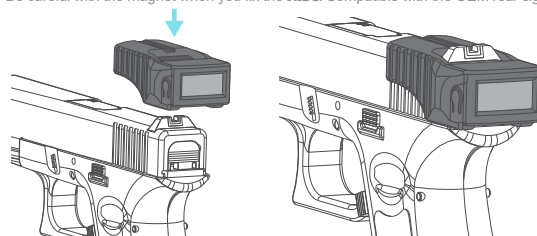
Always make sure your firearm is unloaded, no rounds in the chamber and pointed in a safe direction before you disassemble and work on it.

### Assemble the cover with the screws



### Fix the RISC on the slide

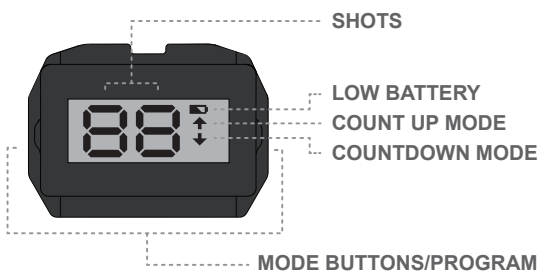
Be careful with the magnet when you fix the RISC. Compatible with the OEM rear sight.



#### WARNING

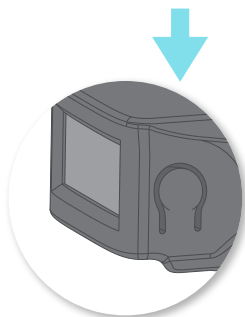
Always make sure your firearm is unloaded, no rounds in the chamber and pointed in a safe direction before you disassemble and work on it.

## 2.0 KNOW YOUR RISC



### BUTTONS CHANGE MODES

Change the mode quickly and intuitively by pressing either button for 1,5 seconds.



## 3.0 SWITCH ON / OFF



Switch on the screen by pressing either button.



Change to Count-Up or Countdown by pressing either button 1,5 sec.

ON

OR



When shooting, the screen automatically switches on and counts shots.

OFF



When not in use, the device automatically switches off after 20 seconds.

### 3.1 COUNT UP MODE

Number of shots increases automatically.

#### SELECT MODE

Press either button for 1,5 sec. until arrow points up.



#### **WARNING**

Always make sure your firearm is unloaded, no rounds in the chamber and pointed in a safe direction before you disassemble and work on it.

### 3.2 TOTAL SHOT COUNTER

Records total number of shots fired while device is installed.

Total Shot Counter mode can be only accessed when in Count Up mode.

#### SELECT MODE

Press both buttons for 3 seconds.



#### AUTOMATIC DISPLAY SEQUENCE



1710 Shots

NOTE. To reset Count-Up or Countdown counters press either button for 1 sec. twice.

### 3.3 COUNTDOWN MODE

Number of shots decreases automatically.

#### SELECT MODE

Press either button for 1,5 sec. until arrow points down.



#### **WARNING**

This device DOES NOT count rounds in the chamber and DOES NOT show if there is a round in the chamber. Always make sure your firearm is unloaded and with no round in the chamber.

### 3.4 COUNTDOWN MODE : PROGRAMMING

Programming can only be accessed while in Countdown mode.

Enter the number of cartridges that you want to shoot and when shooting the numbers (LCD) will decrease.

#### SELECT MODE

Press both buttons for 3 seconds.



LEFT BUTTON  
subtracts shots.



RIGHT BUTTON  
adds shots.

### 4.0 FEATURES

**2 separate modes**  
Count up / Countdown

**Total Shot Counter**

**LCD Screen**  
Only visible to the shooter

**Interchangeable battery (CR1632)**  
Low battery indicator

**Ambidextrous**      **Battery life** 20.000 shots

**Weight** < 25 gr.      **Error rate** < 0.1%

**Operational range temperature** -20°C / 70°C

**Storage range temperature** -30°C / 80°C

**MIL-STD-810G METHOD 504.1**

**IP53**

**COMPATIBLE MODELS** Gen3 & Gen4 & Gen5

17/17L/19/22/23/24/25/26/27  
28/31/32/33/34/35/37/38/39

Other GLOCK models Gen3&4 could also be compatible.  
Stay tuned to our website for updates!