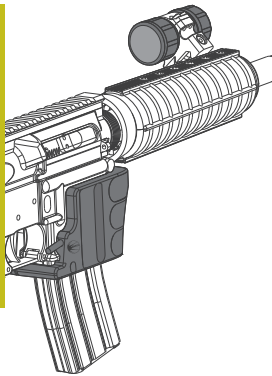
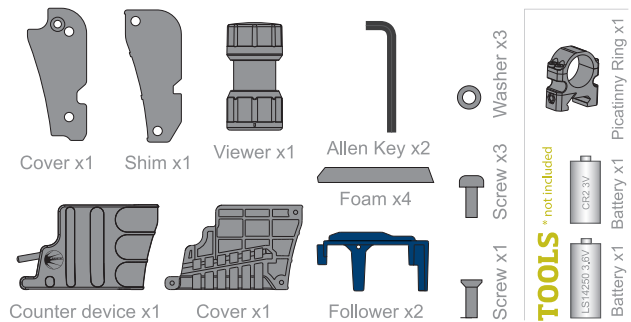


# DIGITAL COUNTER

AR-15 / M-16

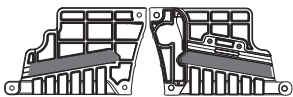


## PACKAGE CONTENTS



## ASSEMBLY - RIFLE

Install the foams for better fit if necessary (depending on the model of the rifle)

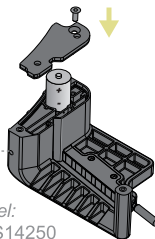


### WARNING

Always make sure your firearm is unloaded, no rounds in the chamber and pointed in a safe direction before you disassemble and work on it.

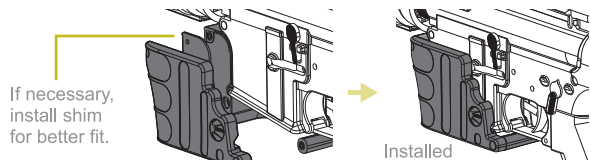
Battery assembly for counter device

Do not cover for a correct device operation.



Battery model:  
1/2 AA or LS14250

Attach DIGITALCOUNTER counter device to the lower receiver using screws and washers from the package

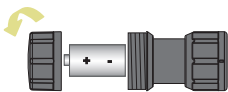


### WARNING

This device DOES NOT count rounds in the chamber and DOES NOT show if there is a round in the chamber. Always make sure your firearm is unloaded and with no round in the chamber.

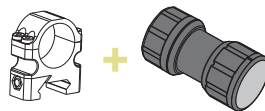
## ASSEMBLY - RIFLE

Battery assembly for viewer



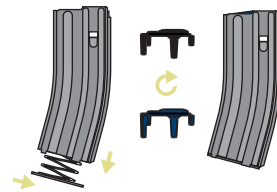
Battery model: CR2 3V

Attach viewer with a mounting ring(1") in a picatinny rail



## ASSEMBLY - MAGAZINE Use only USGI original magazines.

Disassemble the magazine and change the original follower



Supplied follower is compatible with lancer magazines. It may require device calibration.

## ADDITIONAL DATA

- Never insert anything into the count sensor hole.
- Clean with water if it is dirty.
- Count error: 0,25%
- Initial total counts maybe different from zero. (Quality control)

## CALIBRATION Use only USGI original magazines.

THE DEVICE HAS TWO DIFFERENT METHODS OF CALIBRATION

FIRST CALIBRATION:

### 1. SHOT COUNTER CALIBRATION

Put a cartridge in the magazine and shoot.

Push the button until the viewer shows a green LED.

NOTE: You can repeat this procedure as many times as necessary.

SECOND CALIBRATION:

### COUNTER ROUNDS IN THE MAGAZINE CALIBRATION

#### 1. MAGAZINE

Load 14 cartridges in the magazine.

#### 2. RIFLE

Load a cartridge in the chamber. (13 in mag.)

Push the button until green LED turns on. (5 sec)

### 3. FIRE THE RIFLE

Shoot waiting 2 seconds between each shot.

After each shot, the display will show the number of remaining cartridges.

After the last shot, the green LED will turn on. (Calibration mode complete)

### 4. EXITING CALIBRATION MODE

Automatically after last shot. (Green LED).

### 5. RESET

To reset the device, you have to take out the battery of the counter device.